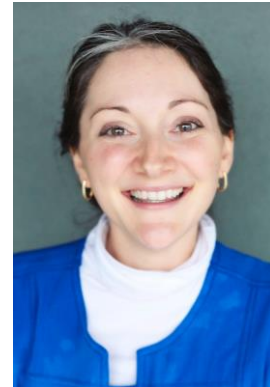


FACULTY

Michelle Dawson, MS, CCC-SLP, CLC, is a Member/Manager of HeartWood Speech Therapy in Columbia, South Carolina, and the MSLP Clinic Coordinator for Francis Marion University in Florence, South Carolina, as well as the host of the First Bite: Fed, Fun, Functional podcast. She delivers ASHA-approved CE courses around the nation on best practices for evaluation and treatment of the medically complex infant, toddler, and child with respect to pediatric oropharyngeal dysphagia, as well as language acquisition within the framework of Early Intervention. She has served as the Treasurer for the Council of State Association Presidents, is a Past President of the South Carolina Speech Language Hearing Association, 2020 recipient of the Pediatric Feeding Disorder Awareness Champion from Feeding Matters, a 2017 graduate of the ASHA Leadership Development Program, and five-time recipient of the ASHA ACE Award.



Financial Disclosures

- Salary from HeartWood Speech Therapy, LLC, and MSLP Graduate Program at Francis Marion University
- Honorarium from Speechtherapypd.com as host of First Bite: Fed, Fun, Functional podcast; and PESI, Inc., as a presenter
- ASHA member and ASHA SIG 13 affiliate
- Complimentary ASHA Learning Pass subscription from ASHA for this presentation

Nonfinancial Disclosures

- Past President of SCSHA (SC Speech Language Hearing Association)
- Volunteer with Feeding Matters, LLC
- 2020 recipient of the Pediatric Feeding Disorder Awareness Champion from Feeding Matters, LLC
- 2017 graduate of ASHA Leadership Development Program

Diane Muzio, PhD, CCC-SLP, is a Professor of Practice at Southern Illinois Carbondale, where she teaches graduate and undergraduate courses in dysphagia, acquired neurogenic communication disorders, research, clinical methods, phonetics, voice, and articulation. She is the clinic coordinator for the SIUC Clinical Center and oversees the graduate practicum training sequence. She is also a clinical educator for the graduate program and has served on numerous program and university committees. She has served as a CAA site reviewer. Muzio is the recipient of the ASHA ACE award, two SIUC Rehabilitation Institute Teacher of the Year Awards, and two SIUC Found grants for online teaching.



Financial Disclosures

- Complimentary ASHA Learning Pass subscription from ASHA for this presentation

Nonfinancial Disclosures

- None

Natalie Tomerlin, MS, CCC-SLP, is an acute care Speech-Language Pathologist at the University of Texas MD Anderson Cancer in Houston, Texas. She completed her undergraduate studies at Augustana College in Illinois, and she earned her Master of Science degree at Purdue University in West Lafayette, Indiana. She then completed her clinical fellowship year at MD Anderson. Tomerlin specializes in dysphagia evaluation and treatment for patients with complex head and neck cancer. In addition, she carries a sub-specialty in evaluation and treatment of alaryngeal communication and filtration options following total laryngectomy.



Financial Disclosures

- Full-time Speech-Language Pathologist at MD Anderson Cancer Center
- Complimentary ASHA Learning Pass subscription from ASHA for this presentation

Nonfinancial Disclosures

- Active member of ASHA

Dawn Wetzel, MAT, CCC-SLP, is a Clinical Associate Professor in the Purdue Department of Speech, Language, & Hearing Sciences, an Adjunct Clinical Associate Professor in Otolaryngology – Head & Neck Surgery at IU School of Medicine – West Lafayette, and the Associate Clinical Director of the Purdue I-EaT Clinic. She has more than 30 years of clinical experience as a certified speech-language pathologist with primary expertise in the area of dysphagia diagnosis and treatment. She provides clinical education in an acute care hospital and teaches the Medical Speech-Language Pathology course at Purdue University. Wetzel is the faculty advisor for the Purdue University SLHS Student Advocacy Council and serves the Indiana Speech-Language-Hearing Association (ISHA) as Vice President of Governmental Affairs and Public Policy. Her ASHA service has included membership in the ASHA Leadership Developmental Program, ASHA Speech-Language Pathology (SLP) Advisory Council, Convention Interprofessional Education and Practice



CPR (Critical Professional Replenishment) for Supervision (SIG 10)

Committee, and reviewer for the ASHA Leadership Development Program – Healthcare. Recent awards include Honors of the Association (ISHA) and the Indiana Lions Speech & Hearing Richard T. Miyamoto Fellowship Award.

Financial Disclosures

- Salary from Purdue University
- Paid for supplemental/prn work through Indiana University Health Partners
- Complimentary ASHA Learning Pass subscription from ASHA for this presentation

Nonfinancial Disclosures

- Collaborative relationship between Indiana University Health and Purdue University for clinical education of MS-SLP students
- Member of Indiana Speech-Language-Hearing Association
- Member of ASHA, and affiliate of ASHA SIGs 11 and 13
- Faculty Advisor for SLHS Student Advocacy Council